

CIBM MEMBERSHIP

INTRODUCTION

The Chartered Institute of Business Management (CIBM) is a subsidiary body of Chartered Secretaries Southern Africa. It was set up to provide professional membership benefits to students while they progress along the CSSA courses until they have passed and become graduates of the Institute (GradICSA).

THE BENEFITS OF MEMBERSHIP

Membership of the Chartered Institute of Business Management is based on 3 pillars, i.e.

- Standards – Discipline, Adherence to the Code of Ethics
- Learning – Continued Professional Development
- Communication – Advocacy, Events

In supporting these pillars, services to members in terms of the value focuses on the:

- CPD Activities, Workshops & Events
- Advocacy on industry issues

Members enjoy affiliation through Chartered Secretaries Southern Africa's membership of a number of international organisations, thereby ensuring that the profession keeps pace with global trends and facilitates interaction with the global community of governance professionals.

CIBM VALUE PROPOSITION

Why a professional designation and membership is crucial to your career:

- Institute committees are actively engaged with government and industry bodies on your behalf, with the aim of promoting industry professionalism, consumer awareness and protection.
- We embark on domestic marketing campaigns to position the governance and accounting profession thereby creating confidence in the industry.
- We nurture your knowledge through our professional development framework to support your membership.



- We assist you to stay current in the rapidly changing environment through the Continuing Professional Development (CPD), thereby investing in yourself, your profession and your future.
- We create an environment in which you are put in touch with your peers who understand your business, concerns and challenges.
- We provide you with a networking and relationship-building arena with peers who are also committed to being at the top of their game.
- We enable you to interact with peers to draw on the technical knowledge and experience of practising professionals.
- We provide you with access to a wealth of information and solutions to your business needs through associations with members and value chain partners.

CRITERIA FOR MEMBERSHIP

The CIBM is not an examining body but recognises modules passed or exempted from the CSSA curriculum. The major difference is that students will be entitled to register as members of the CIBM at various levels after passing modules or if exemptions are granted.

Members of other professional bodies, university graduates or holders of national diplomas can qualify to apply for a higher level of CIBM membership by studying the CSSA qualifying programmes.

Graduates, Associates and Fellows of Chartered Secretaries Southern Africa may apply for dual membership of Chartered Secretaries and CIBM.

CIBM MEMBERSHIP GRADES

The grades of CIBM membership are as follows:

Designations	Initials
Technician CIBM	TCIBM
Affiliate CIBM	AffCIBM
Licentiate CIBM	LCIBM
Associate CIBM	ACIBM
Fellow CIBM/GradICSA	FCIBM

LINK BETWEEN THE CSSA QUALIFYING PROGRAMMES, THE CIBM AND CHARTERED SECRETARIES SOUTHERN AFRICA

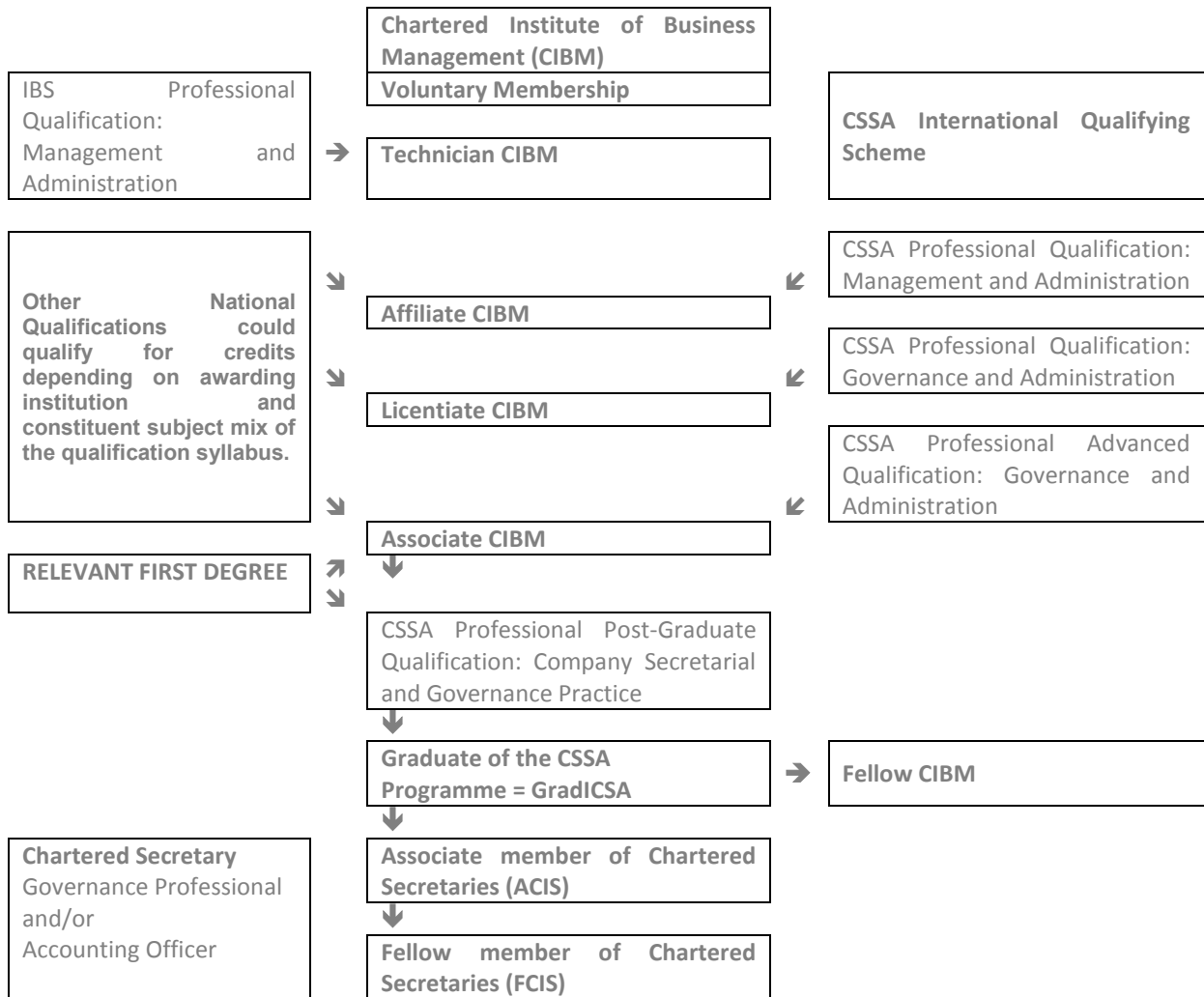
When a student successfully completes one of the CSSA programmes, they may apply for membership of the CIBM at that level. For example, on completing the four modules of



Programme 1 of the CSSA Qualifying Scheme – successful students can voluntarily apply for Affiliate membership of the CIBM.

Membership fees are payable on an annual basis.

The route diagram below indicates how these designations may be earned as well as how this eventually transpires into full membership of the Institute.



Membership Upgrades: membership levels can be upgraded with the successful completion of each CSSA qualifying programme. For example, a person who has completed the CSSA Programme 1 can apply for Affiliate CIBM membership. On subsequent completion of Programme 2, the membership can be upgraded to a Licentiate member and programme 3 Associate of the CIBM.

Eligibility for membership is conditional on full payment of the membership fees and any other related fees such as exemption fees where applicable.

Only candidates who have successfully completed the CSSA International Qualifying Board Examinations (GradICSA) are eligible to apply for Fellow membership of the CIBM.



Associate and Fellow membership of the CIBM do NOT equate to any membership of Chartered Secretaries Southern Africa – membership of this body is open to Fellow CIBM members and/or GradICSA's.

Upon fulfilling the required work experience component and proving personal integrity, Graduates may apply for full membership of Chartered Secretaries Southern Africa at either Associate and/or Fellowship levels on condition they comply with membership rules. Such members may call themselves Chartered Secretaries.

Associates (ACIS) and Fellows (FCIS) who are in professional (private) practice are required to be in possession of an annually renewable practising certificate.

IMPORTANT NOTE: Please do not confuse CIBM membership with membership of Chartered Secretaries Southern Africa or Chartered Secretary status. Members of CIBM are not considered members of CSSA. They are two separate entities.

CONTACT INFORMATION

For CIBM Membership applications or queries, please contact:

membership@chartsec.co.za